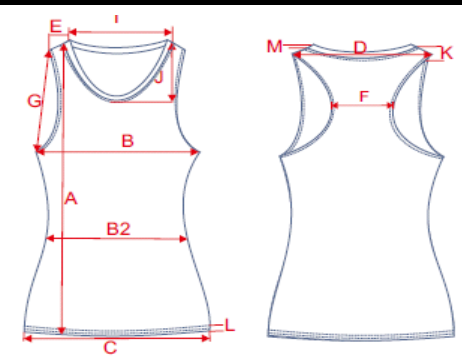


**SIZE CHART / Größentabelle**

**TB906 - Ladies Fitted Viscon Racerback Tank**

	Description		XS	S	M	L	XL
<b>A</b>	Length	cm	70.5	72.5	74.5	76.5	78.5
<b>B</b>	1/2 Chest Width	cm	30	32.5	35	37.5	40
<b>B2</b>	1/2 Waist Width	cm	27	29.5	32	34.5	37
<b>C</b>	1/2 Hem Width	cm	29	31.5	34	36.5	39
<b>D</b>	1/2 Shoulder Width	cm	23.5				
<b>E</b>	Shoulder Width incl. piping (only one side)	cm	3	3.5	3.5	4	4
<b>F</b>	Back Width (smallest point)	cm	3	3.5	3.5	4	4
<b>G</b>	1/2 Armhole Straight	cm	23	24	25	26	27
<b>H</b>		cm					
<b>I</b>	Neckhole (seam to seam)	cm	20	21	22	23	24
<b>J</b>	Front Neckdrop (HPS to seam)	cm	17.5	18	18.5	19	19.5
<b>K</b>	Back Neckdrop (HPS to seam)	cm	4.5	4.5	4.5	4.5	4.5
<b>L</b>	Hem Height	cm	2	2	2	2	2
<b>M</b>	Piping Height	cm	1.3	1.3	1.3	1.3	1.3
<b>N</b>		cm					
<b>P</b>		cm					
<b>Q</b>		cm					
<b>R</b>		cm					
<b>S</b>		cm					



<b>Fabric</b>	170 GSM Jersey 95% Viscose 5% Elasthane
<b>Colours</b>	black